

Office of Clinical Research Updates

June 2021

1. [It's here!](#)
 2. [Billing compliance process improved](#)
 3. [New finance section of OCR website](#)
 4. [Research Billing steps it up](#)
 5. [KC IRB has been replaced!](#)
-



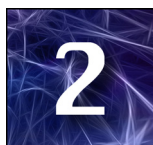
It's here!

The redesign of the OCR website launched April 12th.
Here are a few things to note:



Some functions may not work with Microsoft Edge.

Several users have reported issues with the OCR website when using the Edge browser. The accordion drop-down menus may not appear correctly or open when you click on them. If you are having trouble with any of the menus or other functions on the OCR web pages, please relaunch the [OCR website](#) from a different browser. If you are still having issues, please [let us know](#).



Easy access to IU Health research-related policies. A new web page with links to relevant [IU Health policies](#) can be found under the IU Health Research Info tab on the main menu.



Looking for OnCore training? OnCore training is found under the System Support menu on the home page. Click on the System Support pull down menu and go to Systems > OnCore > [OnCore Training & Support](#).



Newsletter links located on OCR homepage.

- **Access** the latest OCR newsletter by clicking on the middle button on the homepage.

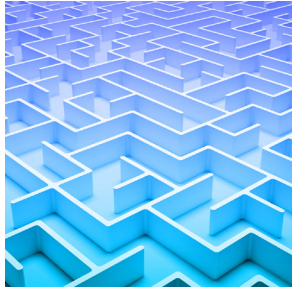


- **Subscribe** to the OCR newsletter from the first button on the home page.



- **To find past newsletters**, click on the newsletter tab in the top menu of the home page.





Billing compliance process improved

The previous process of submitting the Grant Charge Form to communicate research billing information was recently replaced to ensure compliance with research billing and coding requirements for all claims submitted to patient insurance for those in a clinical research study. The change in process improves the communication between Indiana University and Indiana University Health Revenue Cycle Services to reduce the risk of penalty for non-compliance.

Click [here](#) to read more details about the clinical research billing compliance program at Indiana University. This article can also be found on the OCR website in our new finance section (see article below).



New finance section of OCR website

To provide the most up-to-date information about clinical research finance, the Office of Clinical Research has dedicated a new section of the OCR website to financial materials. You can access this section, [Finance Information & Training](#), under the Contracts/Financials tab on the OCR home page.

This new resource area will include, not only working documents, but also informative whitepapers, recorded training sessions presented by the OCR finance staff, and previous newsletter articles that focused on finance. If you do not find the information you are looking for, please email ocrfin@iu.edu to request that the information be added.



Research Billing steps it up

Rapid Improvement Event

In May, members of the Office of Clinical Research participated in a Rapid Improvement Event (RIE) hosted by IU Health Revenue Cycle Services (RCS). Recent audits performed by IU Health Corporate Compliance identified opportunities to improve the OnCore Clinical Research Billing Notification Process. The purpose of the RIE was to review these opportunities, identify process gaps and develop solutions. As a result of this RIE, a Value Stream Steering Team (VSST) was established to execute the next steps toward implementing these solutions. Stay tuned to the OCR newsletter for progress updates from the VSST.

As a reminder . . .

Since December 1, 2020, all new clinical research protocols with items or services billing through IU Health RCS are opened to accrual in OnCore under the IU/IU Health OnCore Clinical Research Billing Notification Process. If you would like to learn more about this process, you can view the recording of our April 16th process review and updates presentation [here](#). We appreciate all the input we have received from the study teams so far and encourage you to continue providing this valuable feedback.

If you have questions or comments about this process, or any clinical research finance topic, contact us at ocrfin@iu.edu or attend our virtual open office hours on Tuesdays from 3-4pm. Click [here](#) to download the appointment to your calendar.



KC IRB has been replaced!

OnCore is now in a relationship with Quali Protocols

The Office of Clinical Research (OCR) and the Office of Research Compliance (ORC) are pleased to announce the launching of a partial integration between OnCore and Quali Protocols (KP) on May 27, 2021.

Why the transition?

Integrating OnCore and KP is the next step in reducing complex and redundant processes between clinical research systems at Indiana University. This integration follows the KC IRB integration that was launched last February. The new integration will include the same OnCore fields as the previous one. We will expand the integration as the transition and need arise.

How will this help you?

- **Alleviates the need for duplicate data entry:** Information regarding Initial IRB Approvals, Amendments, Renewals, Reportable Events, and Closeouts will all flow seamlessly from KP into OnCore.
- **Improves efficiency and productivity:** Data is transferred automatically and in real-time allowing research staff to focus their attention elsewhere.
- **Reduces data entry errors:** IRB review information is provided from the source and is more consistent between clinical research systems.
- **Improves data accessibility and communication:** Allows clinical research staff and services to access IRB data without the need for extraneous e-mails or phone calls.

What if you have questions?

Documentation will soon be available on our website to answer frequently asked questions. If you have questions or encounter issues that require assistance from the Office of Clinical Research, please notify the OCR Research Systems Support Team.

E-mail: oncore@iu.edu

Phone: 317-278-2600

Connecting our Clinical Research Community

Please credit OCR when referring to or using information in this publication.

[Office of Clinical Research](#) is a program of

Indiana CTSI

410 W. 10th Street Ste. 1000

Indianapolis, IN 46202